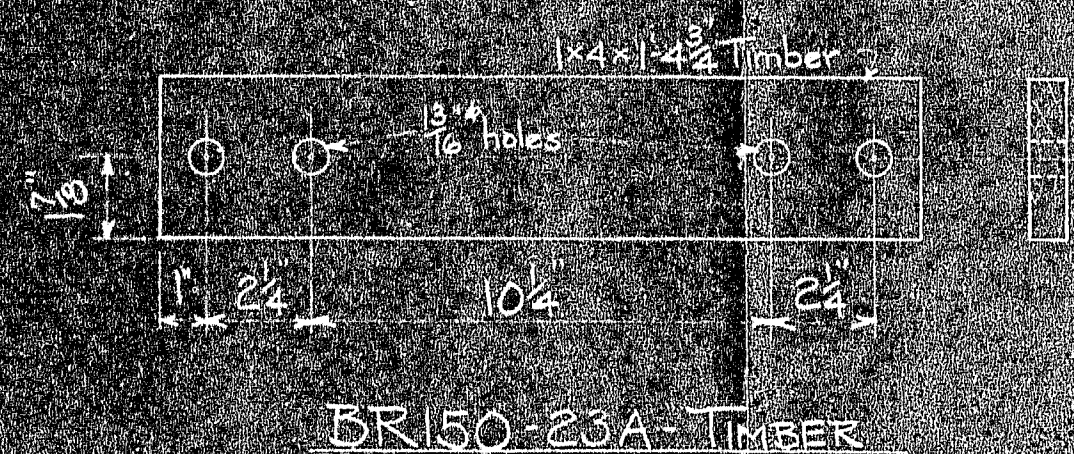


METHOD OF HOLDING SOCKETS IN LINE DURING ADJUSTMENT



BR 50-23A	1400 ft.			3/4" Serving Strand	
BR 50-23A	350'	Wood		Timber	
MARK	REQ'D	MAT'L	REQ. NO.	NAME	REMARKS
BILL OF MATERIAL					
JOHN A. ROEBLING'S SONS CO., TRENTON, N. J.					
DEER ISLE BRIDGE REINFORCEMENT					
METHOD FOR HOLDING STAYS IN LINE DURING ADJUSTMENT					
BY	REVISIONS	DATE	SCALE 3/4" = 1'-0"	SERIAL	SHEET
DES.	APPROVED		DR 50-23A 4-11-44		
TR.			CH. DR.	DR 50	23
DWG. NO.	TITLE	CH. DR.	ENG. S.		
REFERENCE DRAWINGS					

